

Pen Tool handout for Photoshop CC experts

Shortcut: P | Use the shortcuts here to keep a consistent workflow.



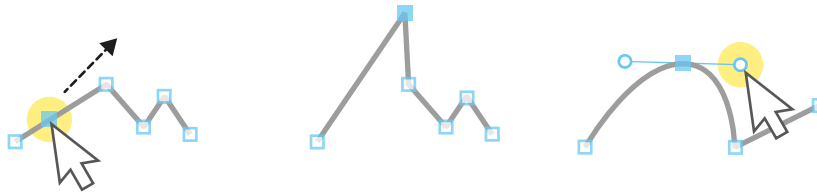
Click to create points and draw straight lines. Click and drag to create anchor points for curved lines.



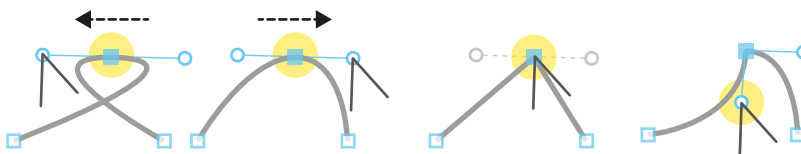
Hover over a path. When passing a point the Pen Tool show a minus sign. Click on the point to delete.



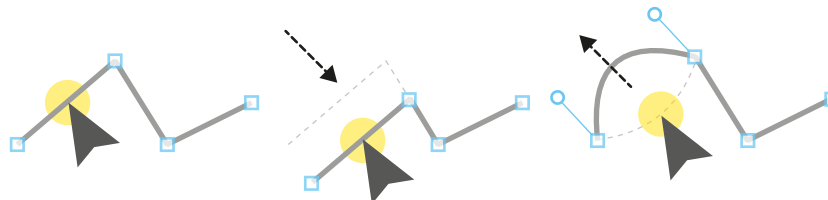
Hover over a path. Anywhere you may add a point with a click on the path.



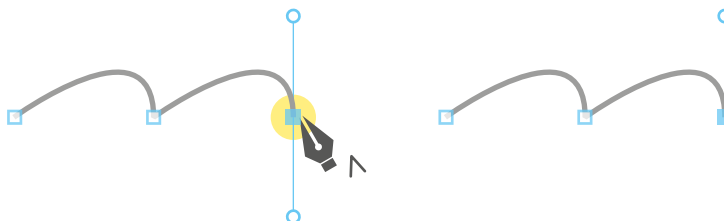
Press and hold CTRL/Cmd to call Direct Selection Tool. Click on a point and drag it to a new position. You may also change length or direction of anchor point if any.



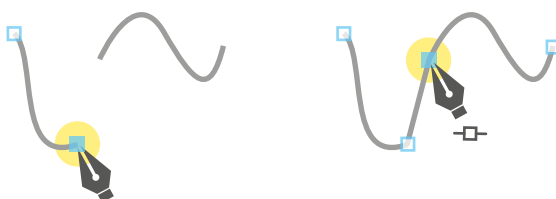
Press and hold ALT/Option key to call Convert Anchor Point Tool. Click and drag on a point to build anchors. Single click on a point to reset anchors. Click and drag left and right anchor point to change direction of curves.



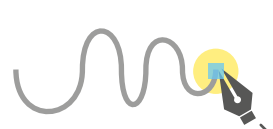
Press and hold CTRL/Cmd. Hover to a section of the path with no points. Click and drag to reshape your path.



ALT/Option click on a path end point to delete the upcoming anchor for the next point. Good for changing direction.



With an active path endpoint, hover up to another curve/line and click to join them.



Catch up a path by hover to the endpoint and click once with the Pen Tool.